



World Trade Center
Stockholm

wtc.se | 08-700 45 00

TOP
INTERNATIONAL
VENUE FOR
MEETINGS &
RECEPTIONS



WHEN EVERYTHING COMES TOGETHER.

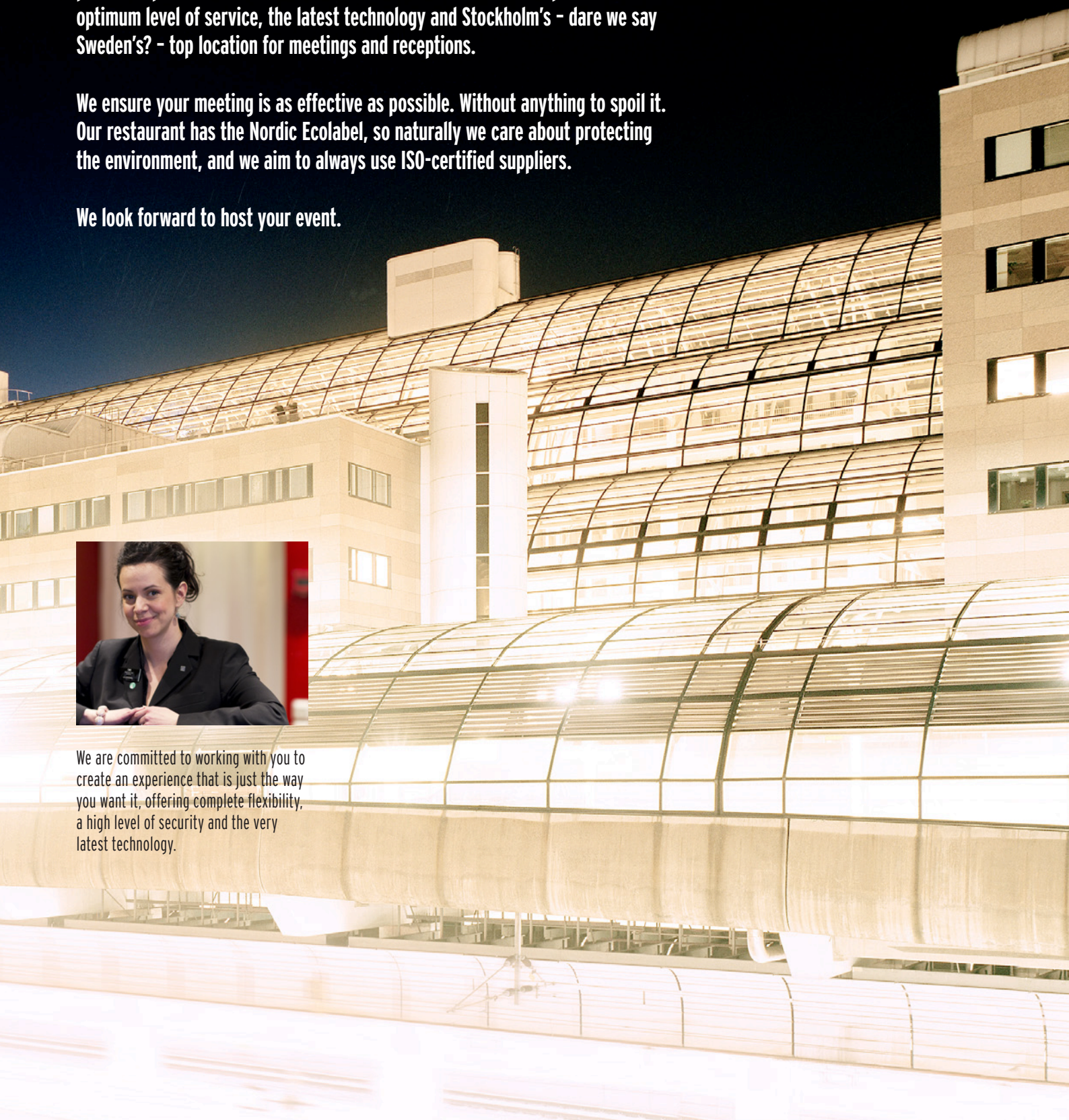
When we first launched our conference and restaurant operations back in 1989, the concept was simple. Think of every possible factor that could disrupt a perfect experience, and eliminate each one. Since then we have provided the optimum level of service, the latest technology and Stockholm's - dare we say Sweden's? - top location for meetings and receptions.

We ensure your meeting is as effective as possible. Without anything to spoil it. Our restaurant has the Nordic Ecolabel, so naturally we care about protecting the environment, and we aim to always use ISO-certified suppliers.

We look forward to host your event.



We are committed to working with you to create an experience that is just the way you want it, offering complete flexibility, a high level of security and the very latest technology.





CONFERENCE & EXPO

A small and intimate gathering, or a major, lavish event. We provide venues and arrangements for all types of meetings and events. The World Trade Center can accommodate up to 1,200 people, giving them an experience to last a lifetime. We have 16 meeting rooms of varying sizes, along with adjacent exhibition space. Conference lunches are served in our WTC Restaurant, which also provides business lunches and an à la carte menu, Monday to Friday.





RESTAURANTS & RECEPTIONS

We have two restaurants. Piazzan is the perfect lunch restaurant offering expertly prepared dishes and a tempting salad buffet. WTC Restaurant, for conference lunches, à la carte, business lunches and dinners of exceptional quality.

The WTC Restaurant and reception rooms offer flexible venues and solutions for up to 1,200 people. Manhattan can accommodate 100 seated, or 200 reception guests. The perfect setting for your breakfast meeting, mini exhibition or party featuring a stage, dance floor and bar. For larger events we would recommend Piazzan, which accommodates up to 800 guests.

Shared experiences can bring people together. We have a great deal of experience in organising events for large and small bookings. Themed parties, wine and chocolate tastings and cookery courses are just a few examples. There's no end to the possibilities.





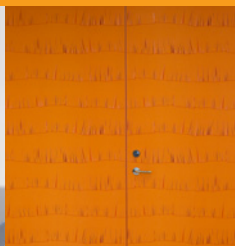
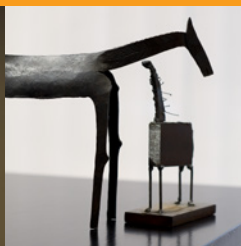
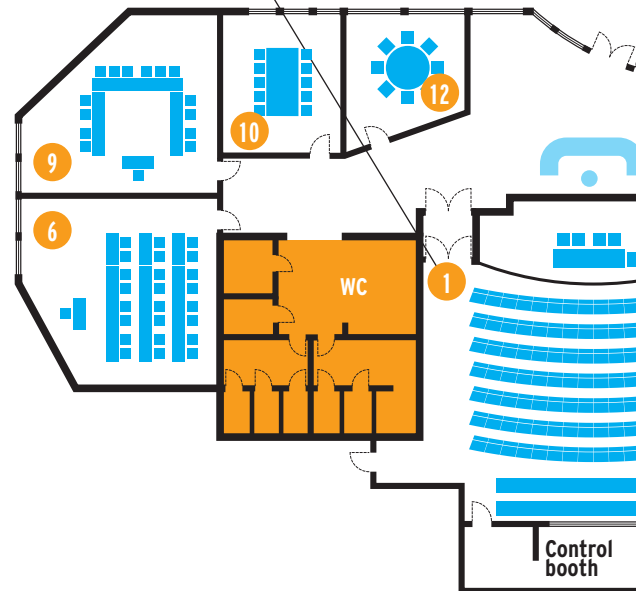


We have a total of 16 conference rooms for up to 170 people. Free wireless internet is available in all rooms and common areas. Information about the conference rooms is available at wtc.se.



MEETING VENUE DETAILS

	VENUE	AREA/SQM	CINEMA	SCHOOL	HORSESHOE
1	NEW YORK	185	170	-	-
2	ATLANTA	120	100	72	40
3	STOCKHOLM	90	70	40	24
4	MILANO	60	50	30	22
5	SYDNEY	45	42	24	20
6	PARIS	40	40	24	18
7	WASHINGTON	40	40	22	16
8	HONG KONG	36	-	-	20
9	LONDON	30	30	20	14
10	AMSTERDAM	25	-	-	10
11	GENÈVE	22	-	-	8
12	BRYSSSEL	21	-	-	8
13	LUXEMBURG	15	-	-	8
14	VIP-ROOM	9	-	-	4
15	BARCELONA	6	-	-	4
16	MANHATTAN	130	120	80	40





Manhattan (not included in the floor plan), a flexible venue with its own entrance from Kungsbron and located right next to WTC Restaurant.





World Trade Center Stockholm

wtc.se | 08-700 45 00

World Trade Center Stockholm
Box 70354, 107 24 Stockholm
Visiting address:
Klarabergsviadukten 70
Stockholm, Sweden
Telephone: +46 (0)8-700 45 00
Bookings: booking@wtc.se

WORLD TRADE CENTER STOCKHOLM IS OWNED
BY ALECTA, A MUTUALLY OWNED PENSION FUND
MANAGER. THE PROPERTY IS HOME TO SEVERAL
SUCCESSFUL COMPANIES. WOULD YOU LIKE TO BE
ONE OF THEM?

VISIT OUR WEBSITE FOR MORE INFORMATION AND
INSPIRATION | wtc.se

